



Electric Utility

123 St. Charles Place
Atlantic City 07004
NJ US
Phone 201 123 4567 Email support@electricutility.com
Website electricutility.com

Work Order: A-123-456

John Monopoly

john.monopoly@electricutility.com
Employee Id 123 456 789



Primary secondary
Site ID: 40719737



Test date: 11-15-2022 1:47:37 PM
Report date: 11-15-2022 1:55:02 PM
Serial number: 20029270
Tester model: ST-3/XT3

Socket		CT		PT	
Form	9S	Ratio	100.0:5	Ratio	2.5416666666666665:1
Wiring	wye	Max Burden	0.2	Max Burden	0.0
Longitude	-71.3299502	Accuracy	2.4	Accuracy	2
Latitude	46.8094607	Acc. model	CT-2500	Acc. model	PT-600
Altitude	19.03 ft	Acc. serial	20011010	Acc. serial	20029250

Measurements

PT

Meas	A	B	C	Unit
U prim	315.53	303.32	314.62	V
U sec	118.84	118.46	119.14	V
PT Multiplier	2.66	2.56	2.64	
PT Ratio	2.66:1	2.56:1	2.64:1	
PT Ratio Error	4.46	0.74	3.90	%
PT Angle	359.57	359.64	360.07	°

CT

Meas	A	B	C	Unit
I prim	54.35	54.04	54.31	A
I sec	2.63	2.65	2.65	A
CT Ratio	103.33:5	101.96:5	102.47:5	
CT Multiplier	20.67	20.39	20.49	
CT Ratio Error	3.33	1.96	2.47	%
CT Angle	0.07	-0.33	-0.08	°

**YOUR
LOGO
HERE**

Electric Utility

123 St. Charles Place
Atlantic City 07004
NJ US
Phone 201 123 4567 Email support@electricutility.com
Website electricutility.com

Work Order: A-123-456

John Monopoly

john.monopoly@electricutility.com
Employee Id 123 456 789

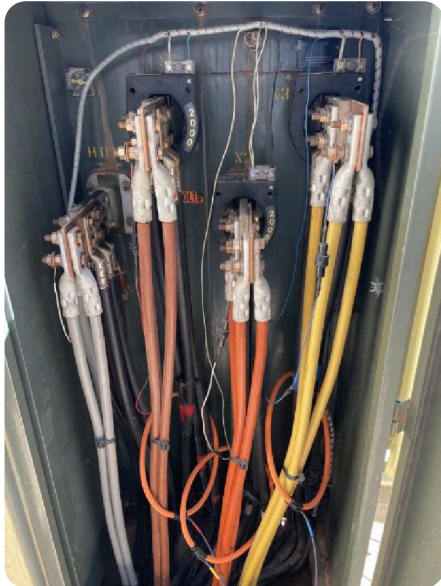


Primary secondary
Site ID: 40719737



Test date: 11-15-2022 1:47:37 PM
Report date: 11-15-2022 1:55:02 PM
Serial number: 20029270
Tester model: ST-3/XT3

Socket		CT		PT	
Form	9S	Ratio	100.0:5	Ratio	2.5416666666666665:1
Wiring	wye	Max Burden	0.2	Max Burden	0.0
Longitude	-71.3299502	Accuracy	2.4	Accuracy	2
Latitude	46.8094607	Acc. model	CT-2500	Acc. model	PT-600
Altitude	19.03 ft	Acc. serial	20011010	Acc. serial	20029250



**YOUR
LOGO
HERE**

Electric Utility

123 St. Charles Place
Atlantic City 07004
NJ US
Phone 201 123 4567 Email support@electricutility.com
Website electricutility.com

Work Order: A-123-456

John Monopoly

john.monopoly@electricutility.com
Employee Id 123 456 789



Primary secondary
Site ID: 40719737



Test date: 11-15-2022 1:47:37 PM
Report date: 11-15-2022 1:55:02 PM
Serial number: 20029270
Tester model: ST-3/XT3

Socket		CT		PT	
Form	9S	Ratio	100.0:5	Ratio	2.5416666666666665:1
Wiring	wye	Max Burden	0.2	Max Burden	0.0
Longitude	-71.3299502	Accuracy	2.4	Accuracy	2
Latitude	46.8094607	Acc. model	CT-2500	Acc. model	PT-600
Altitude	19.03 ft	Acc. serial	20011010	Acc. serial	20029250

Question: Type of test?

Answer: Primary/Secondary Analysis

Question: Location?

Answer: 4321 States Avenue

Notes

Electric Company is the first of the two Utilities and has the exact same statistics as Water Works, the only difference being position. It is situated between St. Charles Place and States Avenue. As a Utility, it has a unique rent collection system which is based off the amount rolled on the dice rather than the number of Houses or Hotels.